



Installation Instructions

AQ-4000 Countertop Water Filter

White, Black, and Brushed Steel finishes

Contents



Filter unit with snap-on cover



Threaded cartridge caps (A & B) and "O" rings pre-installed in filter unit



Filter cartridges (A & B) pre-installed in filter unit (Model no. AQ-4035)



Faucet diverter valve and hose assembly



Brass faucet adapters (2 sizes), rubber washers* and install tool (not included in or covered by the system certification)

Model: AQ-4000

Replacement cartridge: AQ-4035

Rated service flow: 0.5 gpm

Max working pressure: 80 psi (5.62 kg/cm)

Min working pressure: 20 psi (1.40 kg/cm)

Max operating temp: 90° F (32.2° C)

Min operating temp: 40° F (4.44° C)

Max capacity: 450 gallons



System tested and certified by NSF International against NSF/ANSI Standard 42, 53 and 401 for the reduction of the claims specified on the Performance Data Sheet and at www.nsf.org.



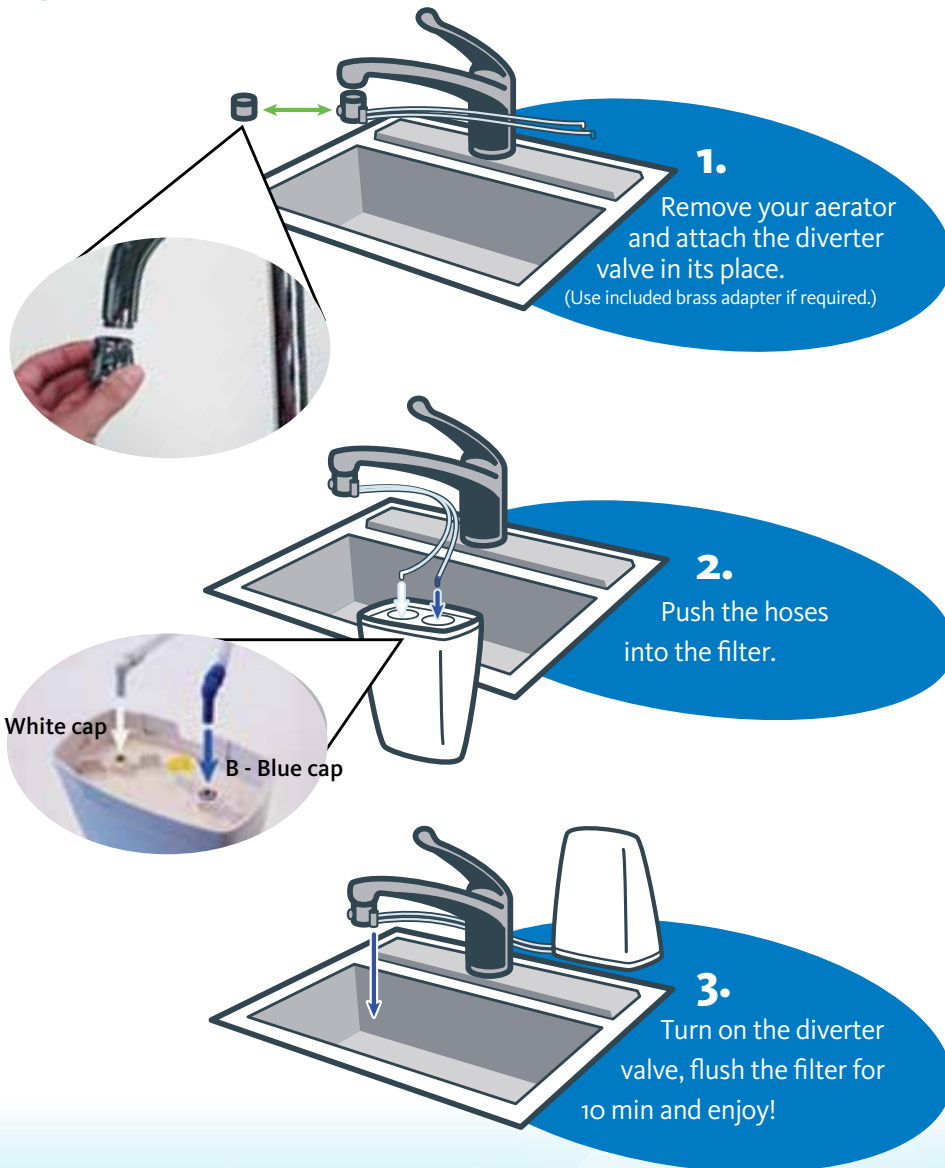
Stop! Does your faucet have a pullout sprayer?

Unfortunately, Aquasana drinking water filters do not fit on these faucets. In order to have filtered water in your home, please consider our Under Counter filter with a faucet that matches your decor!



Do not use with water that is microbiologically unsafe or of unknown water quality without adequate disinfection before or after the system. Systems certified for cyst reduction may be used on disinfected waters that may contain filterable cysts.

Easy to install



For the first 72 hours, the faucet diverter valve will drip intermittently, until the filters become fully saturated. Once they are saturated you should anticipate a residual flow of water each time you use the filter, as the system is vented and designed to clear the line.

Operating

Your filter comes pre-assembled with cartridges you won't need to change for six months, or 450 gallons.



Turn on **cold** water.



Pull pin on diverter valve for clean water. Turn water off when done. If pull pin does not retract, push pin in once water is off.

Precautions:

Aquasana is not liable for consequential or incidental damages due to improper installation.

- **Filter is only to be used with cold water.**
 - Never use this system on constant-pressure applications such as ice makers or drinking fountains.
 - If the faucet diverter valve does not fit, you will need to install one of the brass faucet adapters before attaching it. The brass faucet adapters can be tightened using the install tool. (if the supplied brass faucet adapters do not fit you can obtain the right size from your local hardware store. Be sure to bring your aerator and diverter valve to find the perfect match.)
 - Make sure the rubber washer is in place inside the chrome swivel collar on the diverter valve.
 - If you experience a leak at the hose connection, disconnect and re-seat the hose.
 - Installation must comply with state and local laws.
 - * Supplied brass faucet adapters and seals are not included in or covered by the system certification.
- **Pure Satisfaction**
All Aquasana products offer a 90-day 100% satisfaction guarantee. (A 1-year warranty is included, which covers defects in materials and workmanship.) If for any reason you are not satisfied with your purchase, simply call us, or the dealer you purchased from, for a Return Authorization Code and a full refund will be promptly issued upon return. Thank you for choosing Aquasana!
 - **Don't Void Your Warranty:**
This filter system is designed and tested for use with genuine Aquasana parts including replacement filters and all hardware (diverter valve). Use of parts from other manufacturers may result in loss of contaminant reduction performance, system damage or failure. Use of parts from other manufacturers will also void your warranty. Please visit aquasana.com for all replacement parts.



Performance Data for the Aquasana Drinking Water Filter Models AQ-4000/4600/4601				
Replacement	Operating pressure range	Rated capacity	Operating temp range	Rated flow
AQ-4035	20-80 psi (1.40-5.624 kg/cm ²)	450 gallons	40-90° F (4.44-32.2° C)	0.5 gpm
Manufactured by: Aquasana, Inc. 6310 Midway Road · Haltom City, Texas 76117 · 866.662.6885				

Testing Performed under NSF/ANSI Standards 42 and 53 and in accordance with the California Department of Health Services Drinking Water Treatment Device Program. This system has been tested according to NSF/ANSI 42, 53, 401 & P473 for reduction of the substances listed below. The concentration of the indicated substances in water entering the system was reduced to a concentration less than or equal to the permissible limit for water leaving the system, as specified in NSF/ANSI 42, 53, 401 & P473.

NSF/ANSI 42	Minimum reduction	Overall % reduction	Results
Chlorine Reduction, Free Available	<0.5 mg/l	97.4%	Pass
Chloramine Reduction, Free Available	<0.5 mg/l	97.4%	Pass
Particulate Reduction	85%	99.9%	Pass

NSF/ANSI 53	Required reduction	Overall % reduction	Results
Cyst Live Cryptosporidium & Giardia	99.95%	>99.99%	Pass
Mercury Reduction pH 8.5	<2 ug/L	>95.8%	Pass
Mercury Reduction pH 6.5	<2 ug/L	>96.5%	Pass
Lead Reduction pH 6.5	<10 ug/L	>99.3%	Pass
Lead Reduction pH 8.5	<10 ug/L	>99.3%	Pass
MTBE Reduction	<5 ug/L	86.6%	Pass
Turbidity	<0.5 NTU	99.0%	Pass
VOC Surrogate Test	95%	99.4%	Pass
Asbestos Reduction	99%	>99%	Pass

NSF/ANSI 401	Maximum Concentration	Minimum Reduction	Overall % Reduction	Results
Atenolol	30 ng/L	94.2%	94.2%	Pass
Bisphenol A	300 ng/L	98.80%	98.9%	Pass
Carbamazepine	200 ng/L	98.6%	98.6%	Pass
DEET	200 ng/L	98.7%	98.7%	Pass
Estrone	20 ng/L	96.30%	96.5%	Pass
Ibuprofen	60 ng/L	95.3%	95.4%	Pass
Linuron	20 ng/L	96.6%	96.6%	Pass
Meprobamate	60 ng/L	94.7%	94.7%	Pass
Metolachlor	200 ng/L	98.6%	98.6%	Pass
Naproxen	20 ng/L	96.3%	96.4%	Pass
Nonyl phenol	200 ng/L	97.50%	97.5%	Pass
Phenytol	30 ng/L	95.50%	95.6%	Pass
TCEP	700 ng/L	98%	98%	Pass
TCPP	700 ng/L	97.8%	97.8%	Pass
Trimethoprim	20 ng/L	96.7%	96.7%	Pass

NSF P473	Influent challenge concentration	Maximum permissible product water concentration	Overall % reduction	Results
Perfluorooctanoic acid (PFOA) & Perfluorooctane sulfonate (PFOS)	1.5 ±10% ug/L	0.07 ug/L	96%	Pass

System tested and certified by NSF International against NSF/ANSI Standard 42, 53 & 401 and conforms to NSF protocol P473 for reduction of claims specified on the Performance Data Sheet and at www.nsf.org.

- Filter is only to be used with cold water.
 - Filter usage must comply with all state and local laws.
 - Testing was performed under standard laboratory conditions, actual performance may vary.
 - Systems certified for cyst reduction may be used on disinfected waters that may contain filterable cysts.
 - See owner's manual for general installation conditions and needs plus manufacturer's limited warranty.
- All contaminants reduced by this filter are listed.
 - Not all contaminants listed may be present in your water.
 - Filter does not remove all contaminants that may be present in tap water.

Organic chemicals included by surrogate testing				
VOCs (by surrogate testing using chloroform)	Drinking water regulatory level (MCL/MAC) mg/L	Influent/Unfiltered	Effluent/Filtered	Percent Reduction
alachlor	0.002	0.050	0.001	>98%
atrazine	0.003	0.100	0.003	>97%
benzene	0.005	0.081	0.001	>99%
carbofuran	0.04	0.190	0.001	>99%
carbon tetrachloride	0.005	0.078	0.0018	98%
chlorobenzene	0.1	0.077	0.001	>99%
chloropicrin	—	0.015	0.0002	99%
2,4-D	0.07	0.110	0.0017	98%
dibromochloropropane (DBCP)	0.0002	0.052	0.00002	>99%
o-dichlorobenzene	0.6	0.080	0.001	>99%
p-dichlorobenzene	0.075	0.040	0.001	>98%
1,2-dichloroethane	0.005	0.088	0.0048	95%
1,1-dichloroethylene	0.007	0.083	0.001	>99%
cis-1,2-dichloroethylene	0.07	0.170	0.0005	>99%
trans-1,2-dichloroethylene	0.1	0.086	0.001	>96%
1,2-dichloropropane	0.005	0.080	0.001	>99%
cis-1,3-dichloropropylene	—	0.079	0.001	>99%
dinoseb	0.007	0.170	0.0002	99%
endrin	0.002	0.053	0.00059	99%
ethylbenzene	0.7	0.088	0.001	>99%
ethylene dibromide (EDB)	0.00005	0.044	0.00002	>99%
haloacetonitriles (HAN)				
Bromochloroacetonitrile	—	0.022	0.0005	98%
Dibromoacetonitrile	—	0.024	0.0006	98%
Dichloroacetonitrile	—	0.0096	0.0002	98%
Trichloroacetonitrile	—	0.015	0.0003	98%
haloketones (HK)				
1,1-dichloro-2-propanone	—	0.0072	0.0001	99%
1,1,1-trichloro-2-propanone	—	0.0082	0.0003	96%
heptachlor (H-34, Heptox)	0.0004	0.025	0.00001	>99%
heptachlor epoxide	0.0002	0.0107	0.0002	98%
hexachlorobutadiene	—	0.044	0.001	>98%
hexachlorocyclopentadiene	0.05	0.060	0.000002	>99%
lindane	0.0002	0.055	0.00001	>99%
methoxychlor	0.04	0.050	0.0001	>99%
pentachlorophenol	0.001	0.096	0.001	>99%
simazine	0.004	0.120	0.004	>97%
styrene	0.1	0.150	0.0005	>99%
1,1,2,2-tetrachloroethane	—	0.081	0.001	>99%
tetrachloroethylene	0.005	0.081	0.001	>99%
toluene	1	0.078	0.001	>99%
2,4,5-TP (silvex)	0.05	0.270	0.0016	99%
tribromoacetic acid	—	0.042	0.001	>98%
1,2,4-trichlorobenzene	0.07	0.160	0.0005	>99%
1,1,1-trichloroethane	0.2	0.084	0.0046	95%
1,1,2-trichloroethane	0.005	0.150	0.0005	>99%
trichloroethylene	0.005	0.180	0.0010	>99%
Trihalomethanes (THMs)		Influent/Unfiltered	Effluent/Filtered	Percent Reduction
Bromodichloromethane (THM)				
Bromoform (THM)				
Chloroform (THM)	0.080	0.300	0.015	95%
Chlorodibromomethane (THM)				
Xylenes (total)	10	0.070	0.001	>99%

Do not use with water that is microbiologically unsafe or of unknown water quality without adequate disinfection before or after the system.



1-Year Limited Warranty

WHAT IS COVERED:

This Warranty covers defects in materials or workmanship in manufacturing of your Aquasana drinking or shower water filter systems, except as provided below.

FOR HOW LONG:

This warranty runs for 365 days from the date of purchase by a consumer ("Warranty Period").

WHAT IS NOT COVERED:

This warranty does not cover filter cartridges and any products that were not installed in compliance with the instructions or that have been abused or operated incorrectly. It also does not cover incidental or consequential damages caused by a failure of the product. Finally, this warranty is voided if the product is used with parts that are not genuine Aquasana parts. This includes, but is not limited to: replacement filters, faucets, and diverter valves. This warranty does not cover the RHINO Whole House Filtration System.

WHAT AQUASANA, INC. WILL DO:

We will replace the defective part of the covered product and send it to you with installation instructions upon payment of \$9.50 for shipping and handling per incident.

HOW TO GET SERVICE:

To receive service under this Warranty, you must contact Aquasana, Inc. at 1-866-662-6885 or warranty@aquasana.com within the Warranty Period to describe the problem to a customer service representative who will verify that the product is under warranty and arrange for delivery of a replacement part.

HOW STATE LAW APPLIES:

This warranty gives you specific rights and you may have other rights which vary from state to state.

Some states do not allow the exclusion or limitation of incidental or consequential damages, so the above limitation or exclusion may not apply to you.

WARRANTY CARD: Warranty registration is not required for coverage under the Aquasana Limited Warranty and is not necessary for factory direct purchases made from www.aquasana.com. If you purchased from a retailer or dealer, please complete the online warranty registration form at www.aquasana.com/warranty. Once registered online, we will have a record of your purchase and you will not be required to produce a proof of purchase for a warranty claim.

Aquasana, Inc.
6310 Midway Road
Haltom City, TX 76117

(866) 662-6885
info@aquasana.com
www.aquasana.com



aquasana
Live Healthy®

Aquasana, Inc.

6310 Midway Road
Haltom City, TX 76117
866.662.6885 USA
877.332.7873 Canada
aquasana.com



For exclusive deals

 facebook.com/aquasana
 twitter.com/aquasana